



THE MONTHLY INSIDER

SmartView Display

We recently launched our newest product in the Dorleco product lineup - the SmartView display. Developed for multiple applications, this family of displays can stream real-time data, plots, and/or graphics.

It is a fully programmable automotive display and comes in 3 different sizes:

- 7" CANBUS Display
- 10.1" CANBUS Display
- 15" CANBUS Display
- 15" LVDS Display

Just hook it up to any Vehicle Control Unit (VCU) and:

- Use the standard UI objects to get projects off the ground quickly
- Customize display themes, colors, and infographics
- Use it for fast and easy integration of an HMI into any application

Head over to our [website](#) and download the product brochure and datasheet.

Get your SmartView Today!
Order yours by reaching out to info@dorleco.com.



Newsletter Highlights

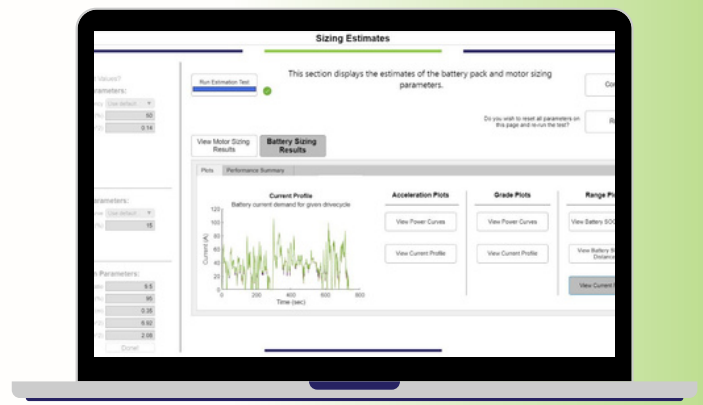
SMARTVIEW DISPLAY

SIMEV

10-HOUR BOOTCAMPS

DORLECO
MERCHANDISE

FULL-TIME OPENINGS



Dorleco SimEV: Full Vehicle Plug-and-Play Simulator

In the previous edition, we announced the Dorleco Full Vehicle Plug and Play Simulator. A lot has changed since, and the launch is here - now known as Dorleco SimEV! The simulator is designed to assist electric vehicle developers with:

- Automating powertrain simulation
- Generating the suitable component size
- Recommending off-the-shelf motors and batteries

This product is free-to-download for all users till Thanksgiving! Head to our website to [get it now!](#)

(Here's a secret! Our engineers at DORLECO have already started working on Sim EV 2.0, and there are some cool upcoming features. Keep following us on our social media handles to stay updated.)

10-Hour Bootcamps

After the successful completion of the first ever BootCamp sessions, Dorleco is glad to announce the next batch this November. This time around, we will be conducting the 'Drive-by-Wire Controls Bootcamp' from 14th to 18th November 2022. It will be a 10 hours (2 hours/day) program where participants learn real-time controls implementation.

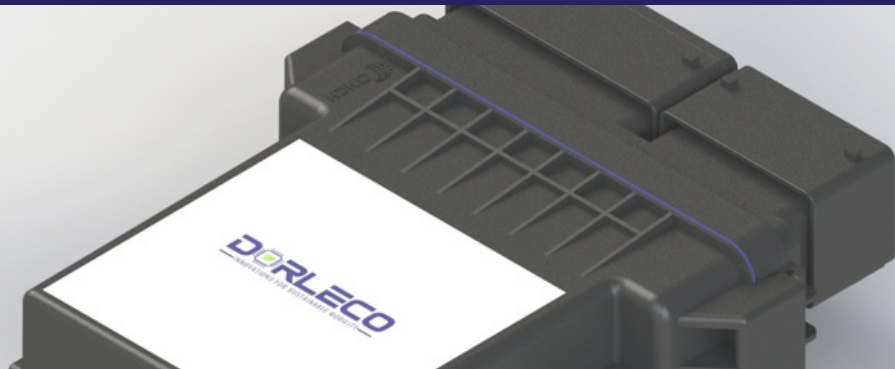
Here is what you get along with the live sessions:

- Simulink model
- Reference materials along with theoretical know-how of controls
- IEEE certificate with 10 Professional Development Hours (PDH) and 1 Continuing Education Units (CEU) *(subject to completion of the final quiz)*

Best-suited for students and working professionals looking to set their foot into the automotive controls and software domain, the bootcamp provides candidates an opportunity to up-skill in:

- V-Cycle development
- System modeling
- Model-Based Development (MBD) methodology
- Requirements generation
- Architecture development
- Controls software development

Wait no more! [Click here](#) to head to our website for more details and register for the program today.



SmartCase

Automotive grade VCU for
EV Supervisory Controls

BUY NOW

Appreciation Corner

We at DORLECO always appreciate hard work and reward smart work!

As a token of appreciation, we presented our employees with some goodies and DORLECO merchandise. We wish them great success and hope these gifts will act as good memories down the lane!



Full-time Openings

We're looking to fill the following positions in our Farmington Hills (FH) facility. Details of the roles have been specified on our careers page: <https://dorleco.com/career/>

For applying, send your resumes to mayuri@dorleco.com (FH) with the position title in the subject.

Job Titles

- Component Developer - MBD Engineer
- System Engineer
- Vehicle Triage Engineer
- Hardware Design Engineer
- ADAS System Test Engineer
- HIL Test Engineer
- Embedded Software Engineer
- Test Automation Developer

