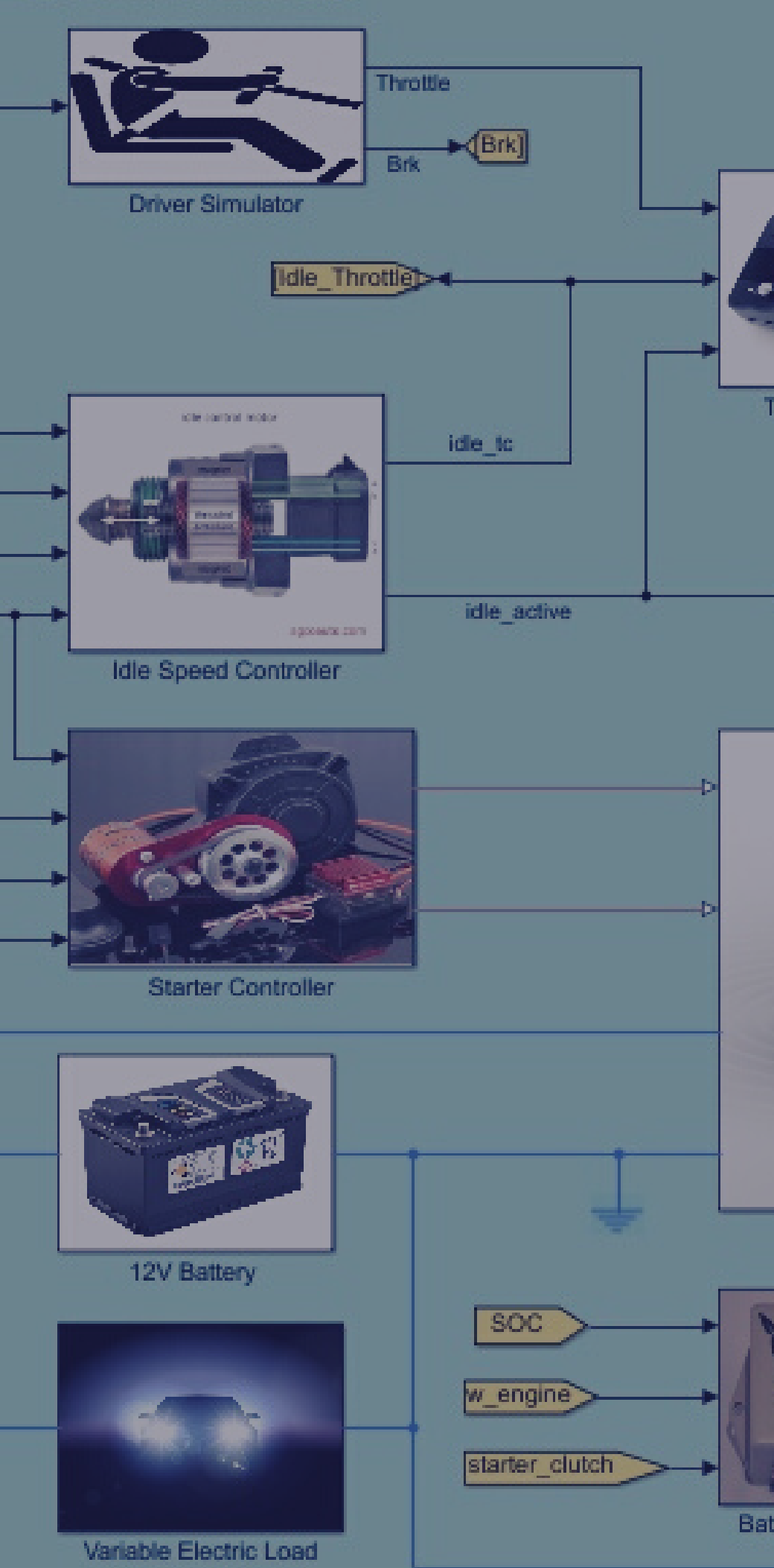




Vehicle Control Systems for Everybody (VCSE)

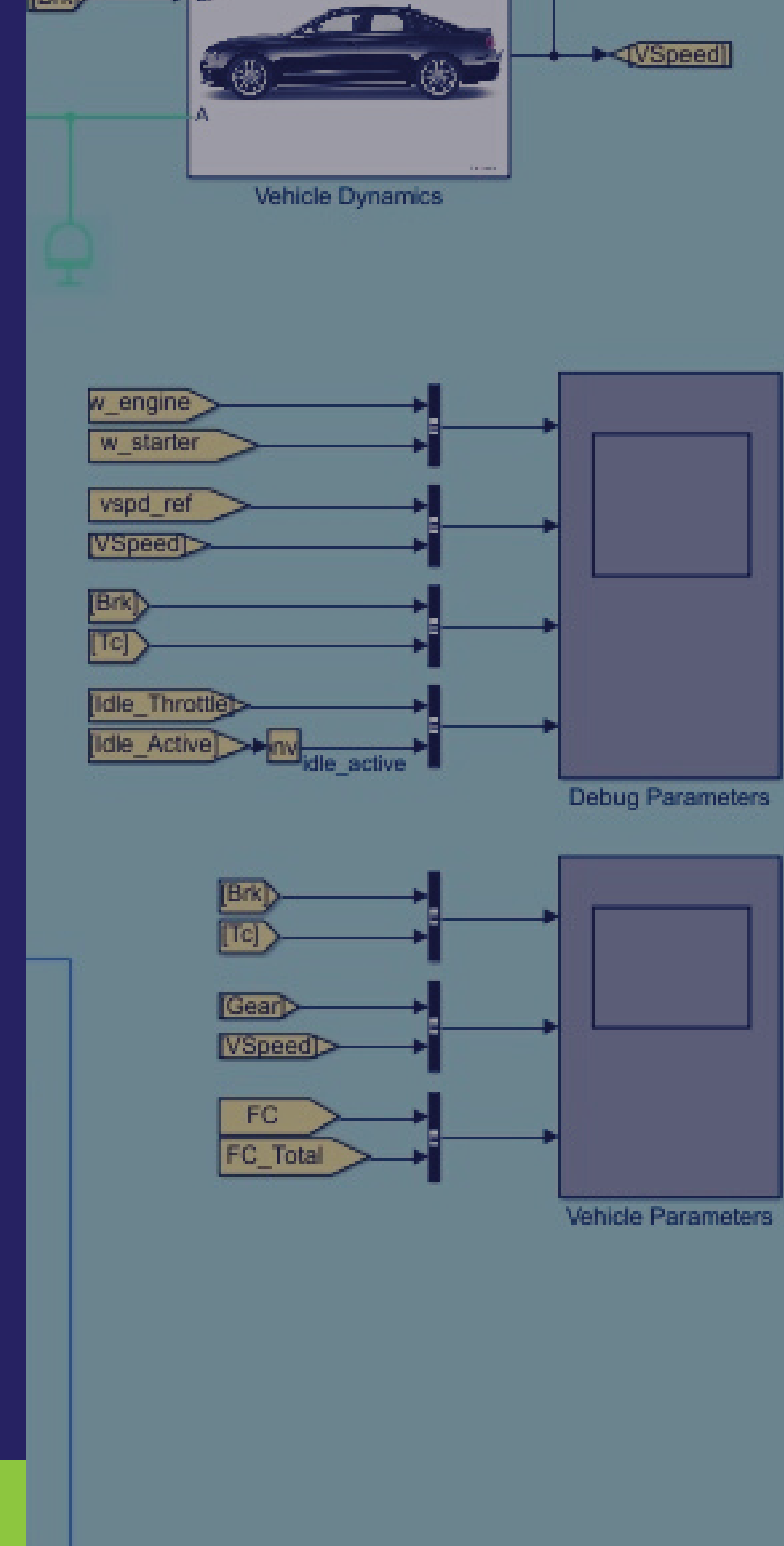
Learn by doing...





Course Outline

Vehicle Control Systems for Everybody (VCSE) is a 200-hour task-based learning program that aims at covering the fundamentals of system modelling, simulation, controls and analysis for electric mobility and autonomous systems.



WORK ON THE LATEST AREAS

eMobility Controls

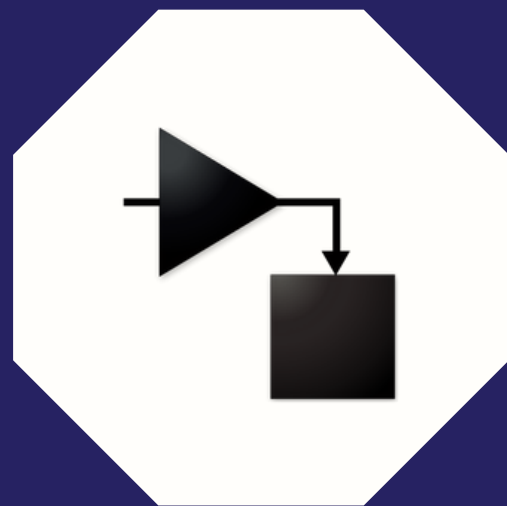
**Covers electrified
vehicle systems like
powertrain,
transmission,
battery, motors,
stability and control
systems**

Autonomous Systems

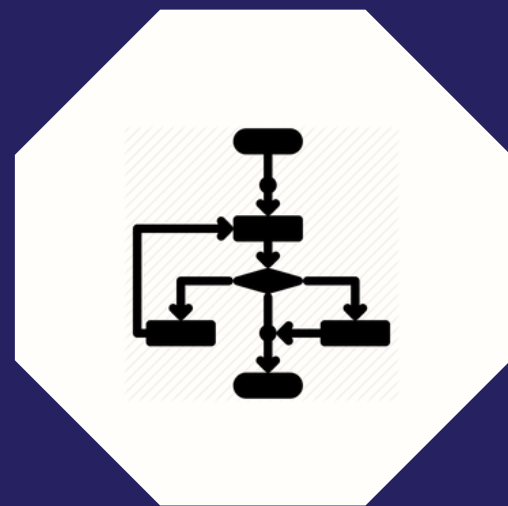
**Covers autonomous
features like FCW,
AEB, ACC, LCS,
LKA, LCA, DMS,
their modelling and
related control
algorithms.**

Phase 1

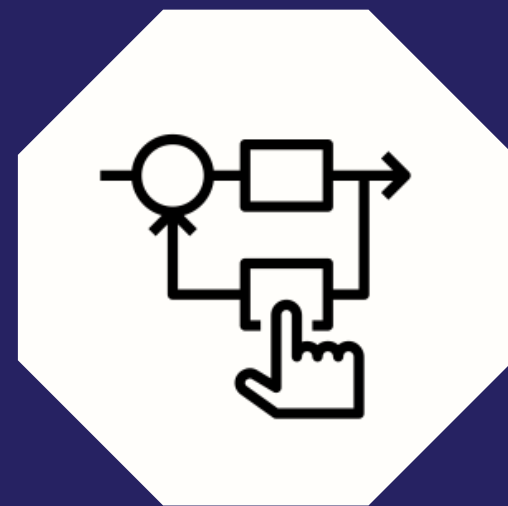
TRAINING PHASE



MATLAB /
Simulink,
Stateflow
introduction



Feedback
systems
implementation



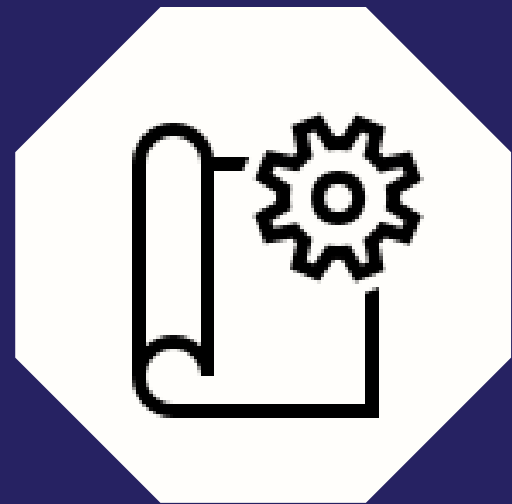
Control systems
basics



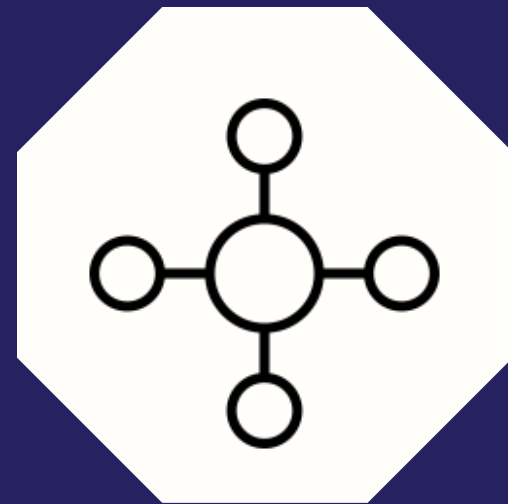
Webinar &
assignments

Phase 2

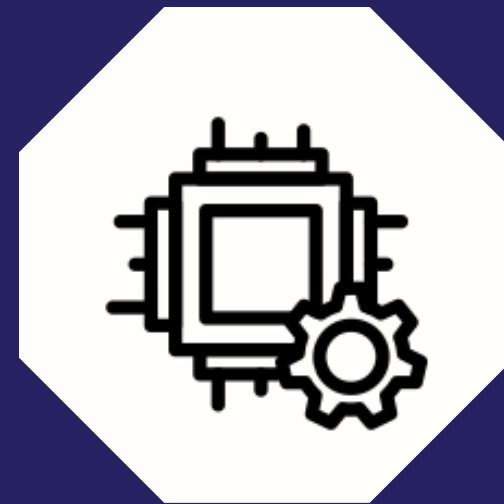
GUIDED PROJECT



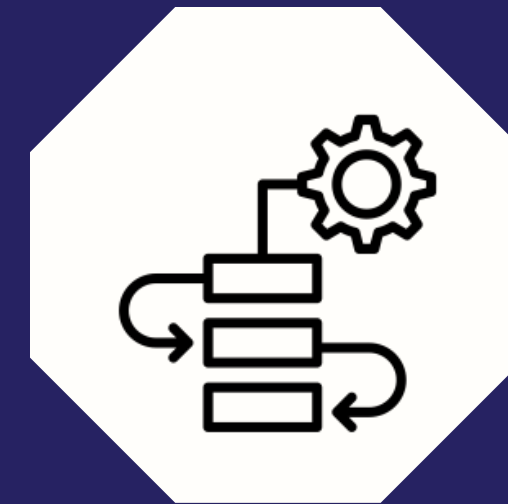
Project
introduction,
requirements,
deliverables



Subsystem
Development



Controller
Development



System
Integration



Testing and
Validation

Take the right foot forward

Solve real-life problems

Get to work on real-world projects to solve industry-specific problems. Showcase your problem-solving skills and add value to your resume through relevant work experience.

Get certified

You will be issued an IEEE-approved certificate of completion, which will add valuable Professional Development Hours (PDH) to your profile.

Start your journey in controls software

Getting hands-on exposure is a great way to develop new skills and increase your domain-specific knowledge. This program is aimed at allowing applicants to do just that.

ALL YOU NEED IS

1

HOME OFFICE

This will be a remotely held program and you only require a laptop for completing it.

3

INTERNET

The live sessions will be held on Zoom and will need a good internet connection.

2

COMPUTER

By working on each of the projects yourself, you will get to learn better and own the projects.

4

MATLAB/SIMULINK

Since model-based design is a major skill in controls software development, having MATLAB/Simulink installed on your laptop is a must.

Enrollment Contact

SEND OUT AN EMAIL TO



Mayuri P
mayuri@dorleco.com

Thank you.

Have a great day!